



NISHESH ARPAN



RERA APPROVED

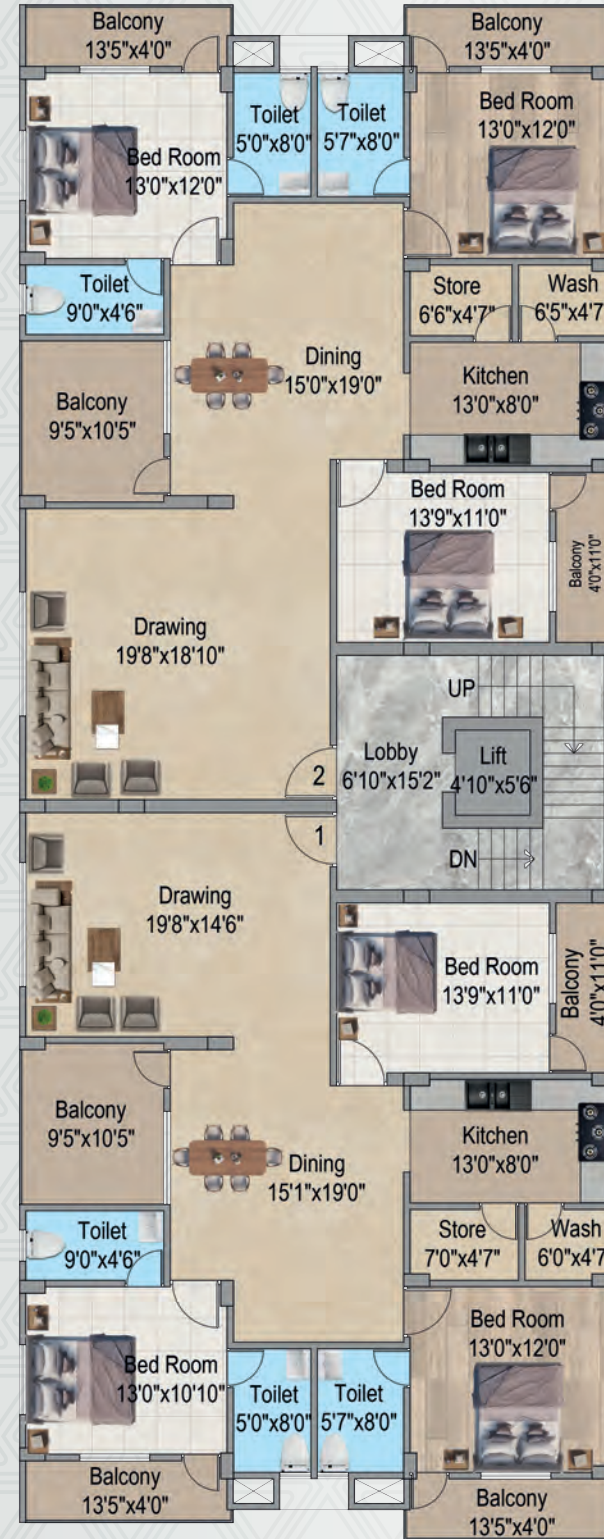


1st to 3d floor plan



NO	FLAT	CARPET AREA	B/U AREA	B.U.A
1.	3 B.H.K.	1190. sq. ft.	1360. sq. ft.	1770. sq. ft.
2.	2 B.H.K.	645. sq. ft.	695. sq. ft.	905. sq. ft.
3.	3 B.H.K.	1205. sq. ft.	1380. sq. ft.	1795. sq. ft.

4th floor plan



NO	FLAT	CARPET AREA	B/U AREA	B.U.A
1.	3 B.H.K.	1555. sq. ft.	1670. sq. ft.	2170. sq. ft.
2.	2 B.H.K.	1565. sq. ft.	1775. sq. ft.	2305. sq. ft.



## SPECIFICATIONS



### STRUCTURE

Rcc Column & Pedestal With Anti- Termitetreatment In Foundation. Rcc Column/ Beams/ Slabs.



### DOOR

Flush Door of Water Proof Commercial Ply.



### WINDOW

3 track sliding UPVCwindows.



### FLOORING

Vitrified floor tiles in whole flat. (except toilet) of JOHNSON.



### BATHROOM

Flooring in floor ceramic tiles and dado in ceramic tiles upto roof height. Standard basin will be provided in both toilets.



### KITCHEN

Granite working platform with ceramic tiles dado upto 24" height. With Handmade S.S Sink.



### WALL

10" thick external and 5" thick internal partition brick work masonry. Wall putty on Internal & Texture on External wall.



### SANITARY FITTINGS

All C.P. or brass fitting of standard make.White glazed vitreous sanitary ware. Wall hung commode with concealed cistern,diverter systems in all Bath rooms.



### ELECTRICAL

Concealed conduit copper wiring standard fittings and fixtures ... of Anchor with modular switches .



### WATER SUPPLY

Through deep boorewell to overhead tank.

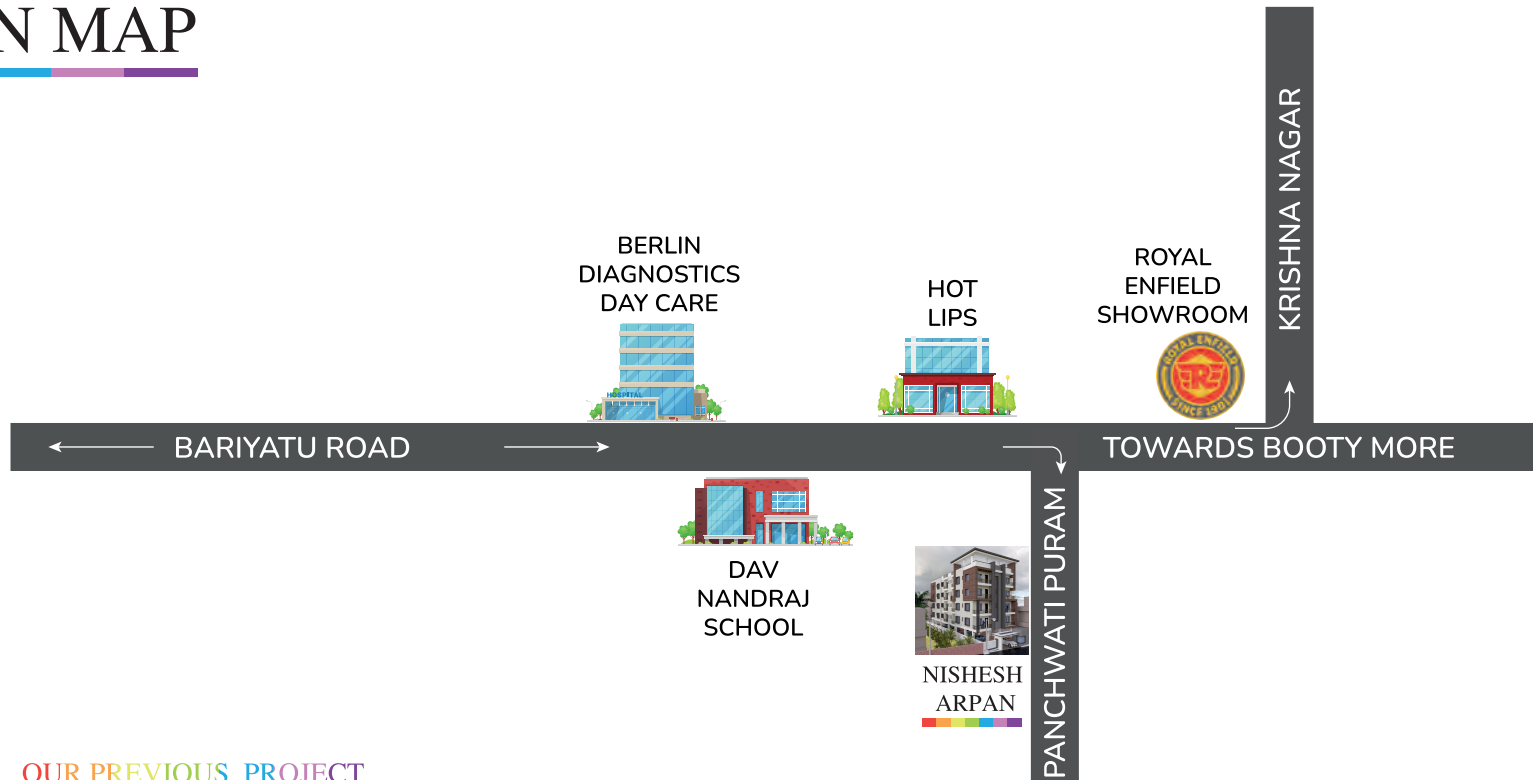
## SALIENT FEATURES

- RERA approved project
- Project approved by R.M.C
- Construction with high quality materials.
- Excellent location with all schools and market at walking distance.
- Well furnished parking facility.
- Easy transportation facility to anywhere in city from the apartment.
- Finance facility from banks.
- Water harvesting system.

## HIGHLIGHTS

- Lift 1 no.
- Branded materials & fittings
- 24X7 security guard.
- CCTV
- Well ventilated rooms.

# LOCATION MAP



## OUR PREVIOUS PROJECT



**PROMOTERS & DEVELOPERS**  
**ARPAN MEGA STRUCTURES PRIVATE LIMITED**  
 OFF. ADDRESS :GE, AMBIKA ENCLAVE, SHIV BAGAN, MAIKEY ROAD,  
 UPPER BAZAAR, RANCHI, INDIA, JHARKHAND  
 Phone : +91 079797 21170  
 E-mail : tusharkumar7965@gmail.com  
 Website : www.arpanmegastructures.com

### PROXIMITY

NISHESH ARPAN TO DAV NANDRAJ	01 MIN
NISHESH ARPAN TO ROCK GARDEN	25 MIN
NISHESH ARPAN TO RANCHI JUNCTION	31 MIN
NISHESH ARPAN TO ALBERT EKKA CHOWK	25 MIN
NISHESH ARPAN TO RIMS HOSPITAL	09 MIN

### DISCLAIMER

All details in this booklet are for easy information and concept purposes only , and do not form part of the agreement. This document is tentative and promoter reserves the right to make variations and modifications.